



**Worm Gear Reducer
Vertical J-Base Kit
Installation & Maintenance Manual**

Power Transmission Solutions
Regal Beloit America, Inc.
7120 New Buffington Road
Florence, KY 41042
Application Engineering: 800 626 2093
www.RegalPTS.com

FORM
9982E
Revised
April 2016

⚠ WARNING

- Read and follow all instructions carefully.
- Disconnect and lock-out power before installation and maintenance. Working on or near energized equipment can result in severe injury or death.
- Do not operate equipment without guards in place. Exposed equipment can result in severe injury or death.

⚠ CAUTION

- Periodic inspections should be performed. Failure to perform proper maintenance can result in premature product failure and personal injury.

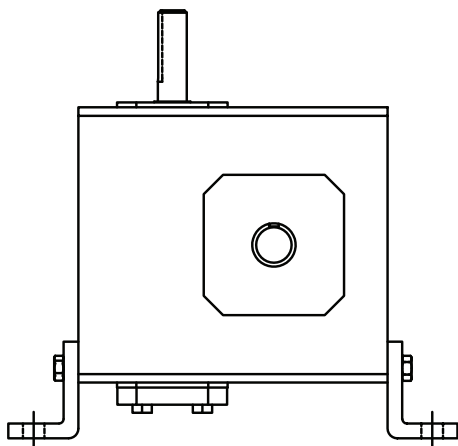
Unit Sizes 133-325

1. Place reducer on a smooth level surface.
2. Align the clearance holes of one base plate with the tapped holes in the reducer housing.
3. Insert two (2) of the supplied capscrews thru the clearance holes in the base into the threaded holes in the housing.
4. Tighten to the appropriate torque as shown in Table 1.
5. Flip reducer over making sure unit is stable.
6. Repeat steps 2-4.
7. Follow instructions supplied with the reducer for mounting assembled unit.

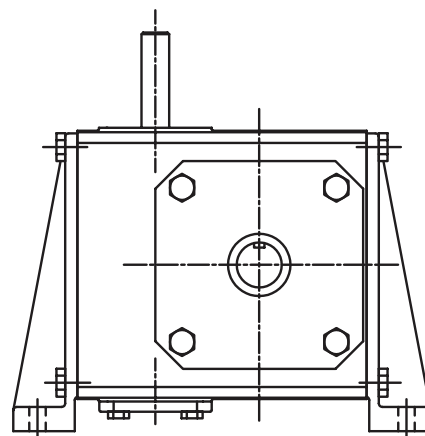
Unit Sizes 375-600

1. Place reducer on a smooth level surface.
2. Align the clearance holes of one base plate with the tapped holes in the reducer housing.
3. Insert four (4) of the supplied capscrews thru the clearance holes in the base into the threaded holes in the housing.
4. Tighten to the appropriate torque as shown in Table 1.
5. Flip reducer over making sure unit is stable.
6. Repeat steps 2-4.
7. Follow instructions supplied with the reducer for mounting assembled unit.

Capscrew Tightening Torques			
Capscrew Size	Torque (FT/LBS)	Capscrew Size	Torque (FT/LBS)
¼ - 20	6.25	7/16 - 14	35.0
5/16 - 18	13.0	½ - 13	50.0
3/8 - 16	20.0	5/8 - 11	90.0



Vertical J Base 133 - 325



Vertical J Base 375 - 600

