



**Worm Gear Reducer Fan Kit
Installation Instructions**

Power Transmission Solutions
Regal Beloit America, Inc.
7120 New Buffington Road
Florence, KY 41042
Application Engineering: 800 626 2093
www.RegalPTS.com

FORM
9177E
Revised
January 2016

⚠ WARNING

- Read and follow all instructions carefully.
- Disconnect and lock-out power before installation and maintenance. Working on or near energized equipment can result in severe injury or death.
- Do not operate equipment without guards in place. Exposed equipment can result in severe injury or death.

⚠ CAUTION

- Periodic inspections should be performed. Failure to perform proper maintenance can result in premature product failure and personal injury.



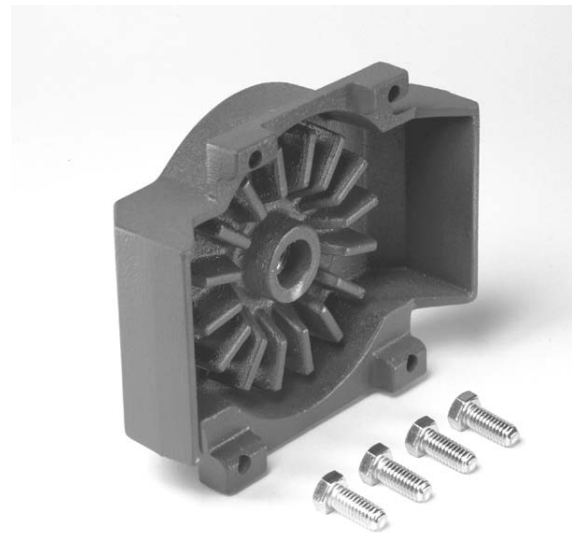
FAN KIT

Step 1. With the reducer upright, worm input side facing away, remove bore plug to expose the backside of the worm and replace with seal (included). Seal should be installed flush with rear of housing (coat oil seal journal on the shaft with thin film of oil before installation). The fan is to be installed on the worm shaft opposite the input.

Step 2. Insert the fan bolt from the kit into the lock washer and into the counterbored side of the fan. Thread bolt into the tapped hole in the worm shaft and tighten to suggested tightening torque (see Table 1).

Step 3. Align the fan cover holes with the tapped holes in the reducer housing. Insert the bolts and lock washers and tighten to suggested tightening torque (see Table 1).

Step 4. The fan should not rub against the fan cover housing during operation.



PART NUMBERS
375FAN
450FAN
516FAN
600FAN

Table 1:

CAPSCREWS TIGHTENING TORQUES			
Capscrew Size	Torque (Ft./Lbs.)	Capscrew Size	Torque (Ft./Lbs.)
1/4 - 20	6.25	7/16 - 14	35.0
5/16 - 18	13.0	1/2 - 13	50.0
3/8 - 16	20.0	5/8 - 11	90.0

A Regal Brand



www.regalbeloit.com