

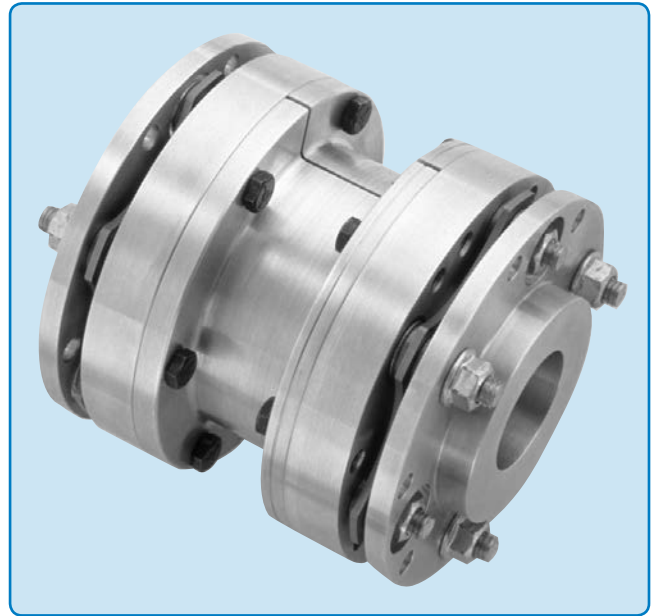
### KD1 CLOSE COUPLED

The KD1 coupling is designed for close coupled applications with minimal to short distance between shaft ends and light to medium loading. It can directly replace most REX\* THOMAS\* DBZ couplings and the unitized disc pack design makes the installation simpler and easier.

The KD1 is comprised of two hubs, two rings, two disc packs, and a piloted split spacer. The standard coupling hubs may be installed in any of three mounting positions for design and installation flexibility. The split spacer pilot gives the KD1 coupling improved dynamic balance characteristics and contains a design feature to hold the split spacer in place while the coupling is rotating.

KD1 disc packs are unitized to greatly reduce the number of loose parts. The split spacer simply drops away from the hubs for faster installation and replacement without moving connected machinery. The standard coupling balance meets AGMA Class 8 as manufactured, dynamic balance to AGMA Class 9 and conformance to API 610 / ISO 13709 are available options.

For higher power requirements, consider a KD10 disc coupling. For higher speeds, consider a KD11 disc coupling.



- Medium Duty
- Minimal to Short Shaft Separations
- Split Spacer with Safety Pilot
- Replacement for REX/THOMAS\* DBZ
- Drop-Out, Unitized Disc Packs

#### KD1 Couplings use MT Disc Packs.

#### COMPLETE COUPLINGS

Coupling Size	Complete Coupling with 2 Std. Hubs		Complete Coupling with 1 Std. Hub and 1 Long Hub		Complete Coupling with 2 Long Hubs	
	Rough Bore	Finish Bore ①	Rough Bore	Finish Bore ①	Rough Bore	Finish Bore ①
103	103 KD 1 SS	103 KD 1 SS FB	103 KD 1 SL	103 KD 1 SL FB	103 KD 1 LL	103 KD 1 LL FB
153	153 KD 1 SS	153 KD 1 SS FB	153 KD 1 SL	153 KD 1 SL FB	153 KD 1 LL	153 KD 1 LL FB
203	203 KD 1 SS	203 KD 1 SS FB	203 KD 1 SL	203 KD 1 SL FB	203 KD 1 LL	203 KD 1 LL FB
253	253 KD 1 SS	253 KD 1 SS FB	253 KD 1 SL	253 KD 1 SL FB	253 KD 1 LL	253 KD 1 LL FB
303	303 KD 1 SS	303 KD 1 SS FB	303 KD 1 SL	303 KD 1 SL FB	303 KD 1 LL	303 KD 1 LL FB
353	353 KD 1 SS	353 KD 1 SS FB	353 KD 1 SL	353 KD 1 SL FB	353 KD 1 LL	353 KD 1 LL FB
403	403 KD 1 SS	403 KD 1 SS FB	403 KD 1 SL	403 KD 1 SL FB	403 KD 1 LL	403 KD 1 LL FB
453	453 KD 1 SS	453 KD 1 SS FB	453 KD 1 SL	453 KD 1 SL FB	453 KD 1 LL	453 KD 1 LL FB

① All finish bores and keyways per AGMA/ANSI 9002 (Imperial) and AGMA/ANSI 9112 (Metric).

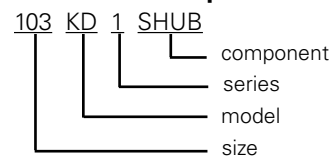
#### COMPONENT PARTS

DESCRIPTION	PART NUMBER
Standard Hub	SHUB
Long Hub	LHUB
* Center Assembly	CA
*MT Disc Pack Assembly	MTDP
*MT Disc Pack Fastener Set	MTFS
*Flange Fastener Set	FFSMT

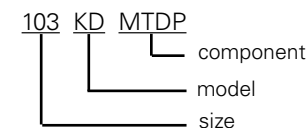
\* Center Assembly includes (2) disc packs, (2) disc pack fastener sets.

\*\* For Disc Packs and Fastener Sets, do not include "Series" number in the part number.

#### How to Order Components



#### How to Order Disc Packs and Fastener Sets

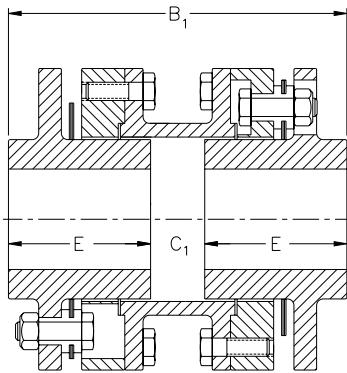


\* Rex and Thomas are believed to be the trademarks and/or trade names of Rexnord Industries, LLC, and are not owned or controlled by Regal Power Transmission Solutions.

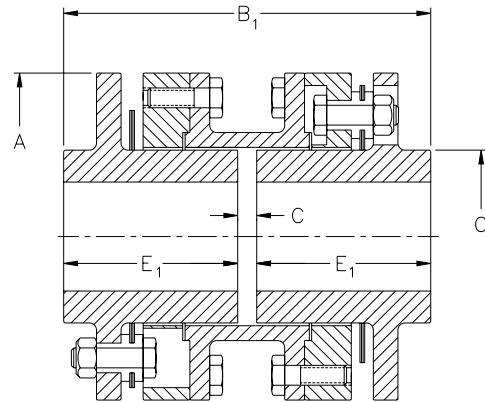
#### SELECTION DATA

Size	Max. Bore (in)	Coupling Rating (HP/100 RPM)	Torque Rating		Maximum Speed Not Balanced (RPM)	Maximum Speed Balanced (RPM)	Total Weight (lbs)	Total WR <sup>2</sup> (lb-in <sup>2</sup> )	Axial Capacity (in)
			Continuous (in-lb)	Peak (in-lb)					
103	1.62	4.3	2710	5420	5400	9700	8.1	18.6	±.060
153	2.25	12.5	7880	15760	4500	7500	19.8	83.9	±.075
203	2.75	22.9	14400	28800	4100	6700	31.9	184	±.090
253	3.25	37.5	23600	47200	3600	5600	51.6	417	±.105
303	3.88	60.0	37800	75600	3200	5100	77.3	856	±.125
353	4.38	100	63000	126000	2900	4400	129	1940	±.150
403	5.00	155	97700	195000	2600	4000	189	3720	±.175
453	5.50	205	129000	258000	2400	3800	223	5170	±.200

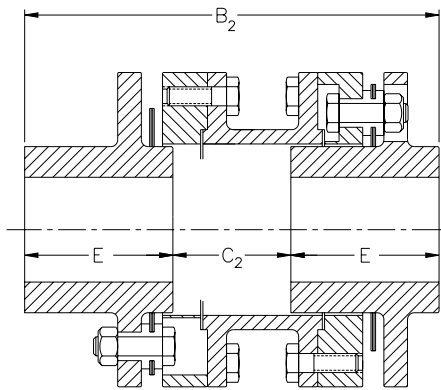
① Data based on maximum bores.



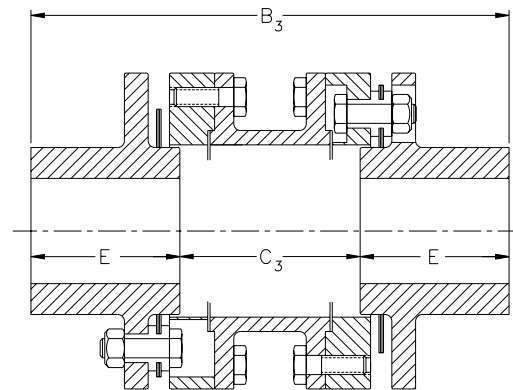
STANDARD HUBS



LONG HUBS



ONE HUB REVERSED



TWO HUBS REVERSED

#### DIMENSIONAL DATA

Size	Rough Bore	A (in)	B <sub>1</sub> (in)	B <sub>2</sub> (in)	B <sub>3</sub> (in)	C (in)	C <sub>1</sub> (in)	C <sub>2</sub> (in)	C <sub>3</sub> (in)	E (in)	E <sub>1</sub> (in)	O (in)
103	.50	4.12	4.94	5.69	6.44	.12	.94	1.69	2.44	2.00	2.41	2.19
153	.50	5.50	6.44	7.75	9.06	.12	1.19	2.50	3.81	2.62	3.16	3.00
203	.75	6.50	7.31	8.81	10.31	.19	1.31	2.81	4.31	3.00	3.56	3.75
253	1.00	7.75	8.38	10.06	11.75	.19	1.50	3.19	4.88	3.44	4.09	4.50
303	1.00	9.00	9.88	11.94	14.00	.25	1.75	3.81	5.88	4.06	4.81	5.25
353	1.00	10.50	11.19	13.56	15.94	.25	1.94	4.31	6.69	4.62	5.47	6.00
403	1.00	12.00	12.62	15.19	17.75	.31	2.12	4.69	7.25	5.25	6.16	6.75
453	1.50	13.00	13.12	15.69	18.25	.31	2.12	4.69	7.25	5.50	6.41	7.50