

M5 & M6

EXCEEDS 12 HR SALT SPRAY,
8,000 PSI MAX PRESSURE.

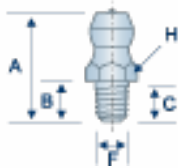
DIN 71412

G.L. Huyett offers an extensive line of metric grease fittings for a variety of applications. 5.0 mm shanks are for use in light-duty applications. If the grease fitting you are looking for is not listed, call our Sales Team for assistance.

TECHNICAL DRAWINGS ARE APPROXIMATE ACTUAL SIZE

H2100

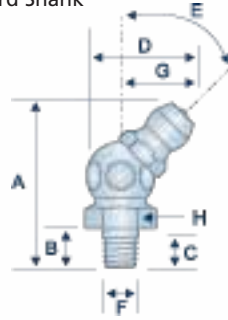
Straight
M5 x 0.8 Taper Thread
Standard Shank



✦ AVAILABLE IN STAINLESS

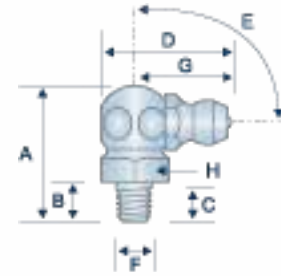
H2101

45° Angle
M5 x 0.8 Taper Thread
Standard Shank



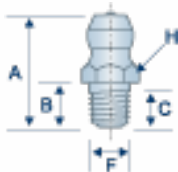
H2102

90° Angle
M5 x 0.8 Taper Thread
Standard Shank



H2115

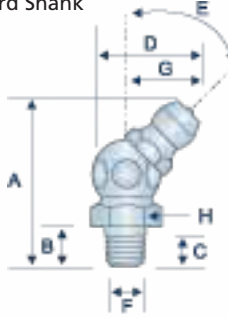
Straight
M6 x 0.75 Taper Thread
Standard Shank



✦ AVAILABLE IN STAINLESS

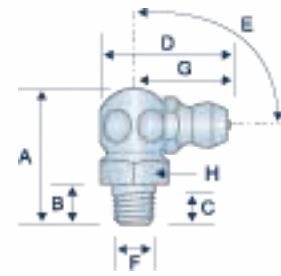
H2116

45° Angle
M6 x 0.75 Taper Thread
Standard Shank



H2117

90° Angle
M6 x 0.75 Taper Thread
Standard Shank



ITEM #	THREAD	ANGLE (E)	OVERALL LENGTH (A)	SHANK LENGTH (B)	MIN. THREAD LENGTH (C)	OVERALL WIDTH (D)	THREAD DIAMETER (F)	SWING CLEARANCE (G)	HEX (H)
H2100	M5 x 0.8	STRAIGHT	15.0 MM	5.5 MM	3.7 MM	□	5.0 MM	□	7.0 MM
H2101	M5 x 0.8	45°	23.5 MM	5.5 MM	3.7 MM	15.0 MM	5.0 MM	10.0 MM	9.0 MM
H2102	M5 x 0.8	90°	18.0 MM	5.5 MM	3.7 MM	17.0 MM	5.0 MM	13.0 MM	9.0 MM
H2115	M6 x 0.75	STRAIGHT	15.0 MM	5.5 MM	3.7 MM	□	6.0 MM	□	7.0 MM
H2116	M6 x 0.75	45°	23.5 MM	5.5 MM	3.7 MM	15.0 MM	6.0 MM	10.0 MM	9.0 MM
H2117	M6 x 0.75	90°	18.0 MM	5.5 MM	3.7 MM	17.0 MM	6.0 MM	13.0 MM	9.0 MM



All manufacturer names and numbers are for cross reference identification purposes only. In no way are we implying that our parts were made by the manufacturers listed. Prices, materials, dimensions, tolerances, designs and grades subject to change without notice. © G.L. Huyett 2011