



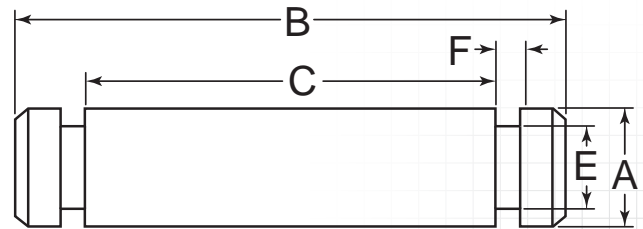
## HEADLESS – GROOVED

### DESCRIPTION

These pins are used in applications with high lateral forces and are designed to be held in place by E-clips inserted into the grooves on each chamfered end. See "E-clips," page 124.

### HOW TO IDENTIFY

1. Verify grooves on each end.
2. Measure diameter (A).
3. Measure effective length (C).
4. Find the part in the chart below.



### PREFIX MATERIAL/FINISH

**HLPG** = LOW CARBON STEEL, ZINC CLEAR  
**HLPGs** = STAINLESS STEEL, PLAIN  
 Material/finish combinations may not be available in all sizes.

ADDITIONAL SIZES AND FINISHES MAY BE AVAILABLE UPON REQUEST

ITEM NUMBER	(A) OUTSIDE DIAMETER +.0001-.030"	(C) EFFECTIVE LENGTH +.0201-.000"	(B) OVERALL LENGTH +.0501-.025"	(E) GROOVE DIAMETER	(F) GROOVE WIDTH +.0021-.000"
PREFIX-0187-0750	.188" (3/16)	.750" (3/4)	1.031" (1-1/32)	.147"	.029"
PREFIX-0187-1000	.188" (3/16)	1.000" (1)	1.281" (1-9/32)	.147"	.029"
PREFIX-0187-1250	.188" (3/16)	1.250" (1-1/4)	1.531" (1-17/32)	.147"	.029"
PREFIX-0187-1500	.188" (3/16)	1.500" (1-1/2)	1.781" (1-25/32)	.147"	.029"
PREFIX-0250-0750	.250" (1/4)	.750" (3/4)	1.031" (1-1/32)	.210"	.029"
PREFIX-0250-1000	.250" (1/4)	1.000" (1)	1.281" (1-9/32)	.210"	.029"
PREFIX-0250-1250	.250" (1/4)	1.250" (1-1/4)	1.531" (1-17/32)	.210"	.029"
PREFIX-0250-1500	.250" (1/4)	1.500" (1-1/2)	1.781" (1-25/32)	.210"	.029"
PREFIX-0312-0750	.313" (5/16)	.750" (3/4)	1.094" (1-3/32)	.250" (1/4)	.029"
PREFIX-0312-1000	.313" (5/16)	1.000" (1)	1.344" (1-11/32)	.250" (1/4)	.029"
PREFIX-0312-1250	.313" (5/16)	1.250" (1-1/4)	1.594" (1-19/32)	.250" (1/4)	.029"
PREFIX-0312-1500	.313" (5/16)	1.500" (1-1/2)	1.844" (1-27/32)	.250" (1/4)	.029"
PREFIX-0375-1000	.375" (3/8)	1.000" (1)	1.344" (1-11/32)	.303"	.039"
PREFIX-0375-1250	.375" (3/8)	1.250" (1-1/4)	1.594" (1-19/32)	.303"	.039"
PREFIX-0375-1500	.375" (3/8)	1.500" (1-1/2)	1.844" (1-27/32)	.303"	.039"
PREFIX-0375-2000	.375" (3/8)	2.000" (2)	2.344" (2-11/32)	.303"	.039"
PREFIX-0375-2500	.375" (3/8)	2.500" (2-1/2)	2.844" (2-27/32)	.303"	.039"
PREFIX-0375-3000	.375" (3/8)	3.000" (3)	3.344" (3-11/32)	.303"	.039"
PREFIX-0437-2500	.438" (7/16)	2.500" (2-1/2)	2.770"	.367"	.039"
PREFIX-0500-1000	.500" (1/2)	1.000" (1)	1.406" (1-13/32)	.396"	.047" (3/64)
PREFIX-0500-1250	.500" (1/2)	1.250" (1-1/4)	1.656" (1-21/32)	.396"	.047" (3/64)
PREFIX-0500-1500	.500" (1/2)	1.500" (1-1/2)	1.906" (1-29/32)	.396"	.047" (3/64)
PREFIX-0500-2000	.500" (1/2)	2.000" (2)	2.406" (2-13/32)	.396"	.047" (3/64)
PREFIX-0500-2500	.500" (1/2)	2.500" (2-1/2)	2.906" (2-29/32)	.396"	.047" (3/64)
PREFIX-0500-3000	.500" (1/2)	3.000" (3)	3.406" (3-13/32)	.396"	.047" (3/64)

FOR DETAILED SPECIFICATIONS AND TOLERANCES, VISIT [HUYETT.COM](http://HUYETT.COM).  
 Prices, materials, dimensions, tolerances, designs, and grades subject to change without notice. © 2015 G.L. Huyett