

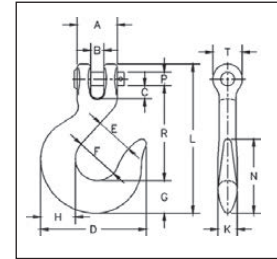
Crosby® Slip Hooks



H-331 / A-331



- Forged Carbon Steel or Forged Alloy Steel – Quenched and Tempered.
- All pins are Alloy Steel – Quenched and Tempered.
- **Not Suitable for use with Grade 80 chain and chain slings used in overhead lifting.** For slings or lifting chains, Grade 80 or 100 alloy components are recommended.



H-331 / A-331 Clevis Slip Hooks

Chain Size (in.)	Stock No.		Working Load Limit (lbs.)*		Weight Each (lbs.)	Dimensions (in.)													
	H-331 Carbon	A-331 Alloy	H-331 Carbon	A-331 Alloy		A	B	C	D	E	F	G	H	K	L	N	P	R	T
1/4	1027383	1027524	1950	2750	.55	1.06	.32	.29	2.75	.94	1.19	.81	.88	.50	3.95	2.13	.31	2.58	.81
5/16	1027409	1027542	2875	4300	.79	1.22	.43	.34	3.06	1.06	1.25	.94	1.00	.56	4.52	2.25	.38	2.87	.97
3/8	1027427	1027560	4000	5250	1.21	1.38	.45	.44	3.63	1.31	1.50	1.13	1.19	.66	5.15	2.56	.44	3.25	1.06
7/16	1027445	1027588	5000	7000	2.06	1.73	.59	.60	4.34	1.56	1.81	1.38	1.44	.81	5.97	3.06	.56	3.70	1.19
1/2	1027463	1027604	6500	9000	2.75	1.88	.57	.53	4.81	1.69	1.94	1.56	1.63	.91	6.53	3.44	.63	4.00	1.31
5/8	1027481	1027622	9250	13500	4.75	2.31	.71	.71	5.63	2.00	2.38	1.81	1.94	1.09	7.89	4.00	.75	4.94	1.56
3/4	–	1027640	–	19250	11.28	3.19	1.18	1.29	7.38	2.50	3.00	2.38	2.50	1.44	10.02	5.06	1.00	6.09	2.09

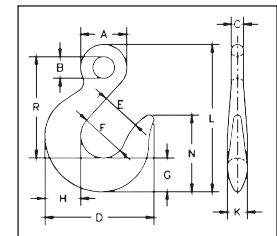
* Ultimate Load is 4 times the Working Load Limit.



H-324



- Forged Carbon Steel – Quenched and Tempered.
- **Not Suitable for use with Grade 80 chain and chain slings used in overhead lifting.** For slings or lifting chains, Grade 80 or 100 alloy components are recommended.



H-324 Eye Slip Hooks

Chain Size (in.)	H-324 Stock No.	Working Load Limit (lbs.)*	Weight Each (lbs.)	Dimensions (in.)											
				A	B	C	D	E	F	G	H	K	L	N	R
1/4	1026749	1950	.40	1.06	.50	.28	2.75	.94	1.19	.81	.88	.50	3.66	2.13	2.56
5/16	1026767	2875	.64	1.25	.63	.34	3.06	1.06	1.25	.94	1.00	.56	4.23	2.25	2.95
3/8	1026785	4000	1.10	1.53	.72	.41	3.63	1.31	1.50	1.13	1.19	.66	4.89	2.56	3.36
7/16	1026801	5000	1.56	1.69	.81	.44	4.34	1.56	1.81	1.38	1.44	.81	5.70	3.06	3.88
1/2	1026829	6500	2.09	1.94	.94	.50	4.81	1.69	1.94	1.56	1.63	.91	6.34	3.44	4.28
5/8	1026847	9250	3.90	2.38	1.13	.63	5.63	2.00	2.38	1.81	1.94	1.09	7.66	4.00	5.22
3/4	1026865	12500	6.93	2.88	1.38	.75	6.75	2.13	2.75	2.19	2.31	1.31	8.73	4.75	5.80

* Ultimate Load is 4 times the Working Load Limit.