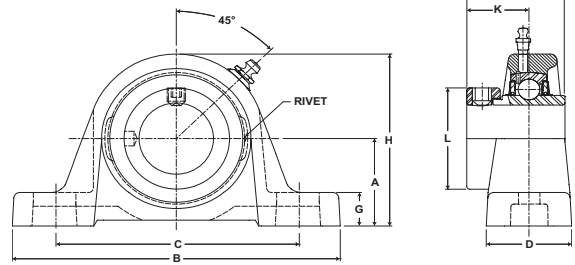


Mounted Ball Bearings *Browning*



- Duty:** Standard
- Rolling Elements:** Ball
- Housing:** Cast Iron Pillow Block
- Self Alignment:** +/- 1.5 Degrees
- Lock:** Eccentric
- Seal:** Contact and Flinger
- Temperature:** -20° to 200°F



VPE 200 Series Standard Duty Pillow Blocks - Eccentric Locking

Bore Diameter inch	Part No.	Bearing Insert No.	Basic Dynamic Rating lb/N	Dimensions inch / mm										Bolt Size	Unit Wt. lb/kg		
				A	B	C		D	G	H	J	K	L				
						min.	max.										
1/2	VPE-208	VE-208	2108	1 3/16	4 7/8	3 1/8	4 1/8	1 7/32	15/32	2 7/32	1 15/32	59/64	1 3/16	3/8	1.0		
5/8	VPE-210	VE-210	9377	30.2	123.8	79.4	104.8	31.0	11.9	56.4	37.3	23.4	30.2		.45		
3/4	VPE-212	VE-212	2611	1 5/16	5	3 3/8	4 3/16	1 11/32	17/32	2 17/32	1 23/32	1 3/64	1 5/16	3/8	1.5		
			11614	33.3	127.0	85.7	106.4	34.1	13.5	64.3	43.7	26.6	33.3		.68		
7/8	VPE-214	VE-214	2801	1 7/16	5 1/2	3 11/16	4 9/16	1 13/32	19/32	2 13/16	1 3/4	1 1/16	1 1/2	3/8	1.8		
15/16	VPE-215	VE-215		12459	36.5	139.7	93.7	115.9	35.7	15.1	71.4	44.5	27.0			38.1	.82
1	VPE-216	VE-216															
1 1/8	VPE-218	VE-218	4381	1 11/16	6 3/16	4 3/16	5 1/16	1 3/4	21/32	3 9/32	1 29/32	1 3/16	1 3/4	1/2	2.9		
1 3/16	VPE-219	VE-219		19487	42.9	157.2	106.4	128.6	44.5	16.7	83.3	48.4	30.2			44.5	1.32
1 1/4	VPE-220S	VE-220S															
1 1/4	VPE-220	VE-220	5782	1 7/8	6 3/4	4 5/8	5 3/8	1 3/4	23/32	3 11/16	2 1/64	1 9/32	2 3/16	1/2	3.8		
1 3/8	VPE-222	VE-222		25718	47.6	171.5	117.5	136.5	44.5	18.3	93.7	51.2	32.5			55.6	1.72
1 7/16	VPE-223	VE-223															
1 1/2	VPE-224	VE-224	7340	2	7 1/8	4 7/8	5 7/8	1 15/16	13/16	4	2 7/32	1 3/8	2 3/8	1/2	5.0		
			32648	50.8	181.0	123.8	149.2	49.2	20.6	101.6	56.4	34.9	60.3			2.27	
1 5/8	VPE-226	VE-226	7901	2 1/8	7 3/8	5 1/4	6 1/16	2	3/4	4 1/4	2 7/32	1 3/8	2 1/2	1/2	5.7		
1 11/16	VPE-227	VE-227		35144	54.0	187.3	133.4	154.0	50.8	19.1	108.0	56.4	34.9			63.5	2.59
1 3/4	VPE-228	VE-228															
1 15/16	VPE-231	VE-231	7889	2 1/4	8	5 7/8	6 1/2	2 3/16	3/4	4 9/16	2 15/32	1 1/2	2 3/4	5/8	6.3		
			35090	57.2	203.2	149.2	165.1	55.6	19.1	115.9	62.7	38.1	69.9			2.86	
2	VPE-232	VE-232	9752	2 1/2	8 13/16	6 9/16	7 5/16	2 5/16	7/8	4 31/32	2 13/16	1 23/32	3	5/8	8.1		
2 3/16	VPE-235	VE-235		4377	63.5	223.8	166.7	185.7	58.7	22.2	126.2	71.4	43.7			76.2	3.67
2 1/4	VPE-236	VE-236	13971	2 3/4	9 1/2	6 7/8	7 15/16	2 3/8	7/8	5 9/16	3 1/16	1 27/32	3 3/8	5/8	10.2		
2 7/16	VPE-239	VE-239		62143	69.9	241.3	174.6	201.6	60.3	22.2	141.3	77.8	46.8			85.7	4.63