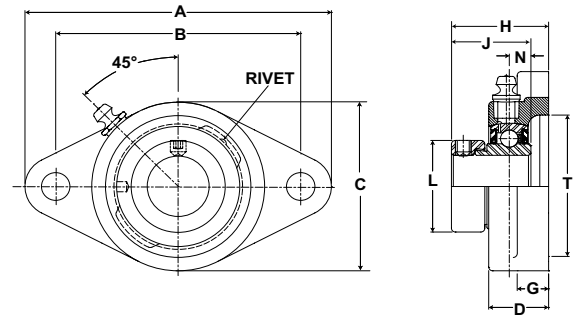


Mounted Ball Bearings *Browning*



- Duty:** Intermediate
- Rolling Elements:** Ball
- Housing:** Cast Iron Two Bolt Flange
- Self Alignment:** +/- 1.5 Degrees
- Lock:** Eccentric
- Seal:** Contact
- Temperature:** -20° to 200°F



VF2E 100 Series Intermediate Duty Two Bolt Flanges - Eccentric Locking

Bore Diameter inch	Part No.	Bearing Insert No.	Basic Dynamic Rating lb/N	Dimensions inch / mm										Bolt Size	Unit Wt. lb/kg
				A	B	C	D	G	H	J	L	N	T Cored		
1/2	VF2E-108	VE-108	2108	3 7/8	3	2 1/8	23/32	3/8	1 21/64	1 3/16	1 3/16	5/16	1 3/4	3/8	1.0 .45
5/8	VF2E-110	VE-110	9377	98.4	76.2	54.0	18.3	9.5	33.7	30.2	30.2	7.9	44.5		
3/4	VF2E-112	VE-112	2611 11614	4 13/32 111.9	3 17/32 89.7	2 1/2 63.5	57/64 22.6	7/16 11.1	1 31/64 37.7	1 17/64 32.1	1 5/16 33.3	11/32 8.7	2 50.8	3/8	1.1 .50
7/8	VF2E-114	VE-114	2801 12459	4 7/8 123.8	3 57/64 98.8	2 3/4 69.9	61/64 24.2	1/2 12.7	1 35/64 39.3	1 17/64 32.1	1 1/2 38.1	11/32 8.7	2 5/16 58.7		
15/16	VF2E-115	VE-115		1	VF2E-116	VE-116	1 1/8	VF2E-118	VE-118	1 3/16	VF2E-119	VE-119	1 1/4	VF2E-120S	VE-120S
1 1/8	VF2E-118	VE-118	4381 19487	5 9/16 141.3	4 19/32 116.7	3 1/8 79.4	1 5/64 27.4	17/32 13.5	1 47/64 44.1	1 27/64 36.1	1 3/4 44.5	3/8 9.5	2 3/4 69.9	7/16	1.9 .86
1 3/16	VF2E-119	VE-119		1 1/4	VF2E-120	VE-120	1 3/8	VF2E-122	VE-122	1 7/16	VF2E-127	VE-127	1 3/4		
1 1/4	VF2E-120	VE-120	5782 25718	6 1/8 155.6	5 1/8 130.2	3 5/8 92.1	1 5/32 29.4	19/32 15.1	1 29/32 48.4	1 37/64 40.1	2 3/16 55.6	27/64 10.7	3 3/16 81.0	1/2	2.8 1.27
1 3/8	VF2E-122	VE-122		1 7/16	VF2E-123	VE-123	1 1/2	VF2E-124	VE-124	1 11/16	VF2E-127	VE-127	1 3/4		
1 7/16	VF2E-123	VE-123	7340 32648	6 3/4 171.5	5 21/32 143.7	4 1/8 104.8	1 19/64 32.9	5/8 15.9	2 7/64 53.6	1 49/64 44.8	2 3/8 60.3	31/64 12.3	3 1/2 88.9	1/2	3.6 1.63
1 1/2	VF2E-124	VE-124		1 11/16	VF2E-127	VE-127	1 3/4	VF2E-128	VE-128	1 11/16	VF2E-127	VE-127	1 3/4		
1 11/16	VF2E-127	VE-127	7901 35144	7 1/16 179.4	5 27/32 148.4	4 3/8 111.1	1 21/64 33.7	5/8 15.9	2 5/32 54.8	1 49/64 44.8	2 1/2 63.5	31/64 12.3	3 3/4 95.3	9/16	3.8 1.72
1 3/4	VF2E-128	VE-128		1 15/16	VF2E-131	VE-131	2	VF2E-132S	VE-132S	1 15/16	VF2E-131	VE-131	2		
1 15/16	VF2E-131	VE-131	7889 35090	7 7/16 188.9	6 3/16 157.2	4 9/16 115.9	1 23/64 34.5	5/8 15.9	2 5/32 54.8	1 25/32 45.2	2 3/4 69.9	1/2 12.7	4 101.6	9/16	4.5 2.04
2	VF2E-132S	VE-132S		2	VF2E-132	VE-132	2 3/16	VF2E-135	VE-135	2	VF2E-132	VE-132	2 3/16		
2	VF2E-132	VE-132	9752 43377	8 1/2 215.9	7 1/4 184.2	5 1/4 133.4	1 33/64 38.5	13/16 20.6	2 7/16 61.9	1 63/64 50.4	3 76.2	35/64 13.9	4 1/4 108.0	5/8	6.1 2.77
2 3/16	VF2E-135	VE-135													