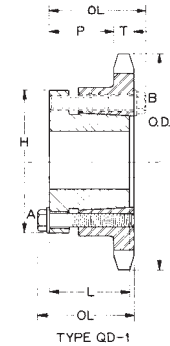


Sprockets for No. 80, 1" Pitch ANSI Chain

Table No. 1 Steel Single Sprockets with Q-D® Bushings

Part No.	Bushing	Bore Range	DIAMETERS		Type	No. Teeth	DIMENSIONS						Wt. Less Bushing
			Outside	Pitch			T Nom.	OL	L	P	C	H	
H80SH11*	SH	1/2 - 1 5/8"	4.01"	3.550"	QD-1	11	.575"	1 23/32"	1 5/16"	59/64"	-	2 11/16"	1.33
H80SH12	SH	1/2 - 1 5/8"	4.33	3.864	QD-1	12	.575	1 23/32	1 5/16	59/64	-	2 11/16	1.65
H80SDS13	SDS	1/2 - 2	4.66	4.179	QD-1	13	.575	1 21/32	1 5/16	55/64	-	3 1/8	1.78
H80SDS14	SDS	1/2 - 2	4.98	4.494	QD-1	14	.575	1 21/32	1 5/16	55/64	-	3 1/8	2.21
H80SK15*	SK	1/2 - 2 5/8"	5.30	4.810	QD-1	15	.575	2 11/32	1 15/16	1 31/64	-	3 7/8	3.21
H80SK16	SK	1/2 - 2 5/8"	5.63	5.126	QD-1	16	.575	2 11/32	1 15/16	1 31/64	-	3 7/8	3.55
H80SK17	SK	1/2 - 2 5/8"	5.95	5.442	QD-1	17	.575	2 11/32	1 15/16	1 31/64	-	3 7/8	3.98
H80SK18	SK	1/2 - 2 5/8"	6.27	5.759	QD-1	18	.575	2 11/32	1 15/16	1 31/64	-	3 7/8	4.47
H80SK19	SK	1/2 - 2 5/8"	6.59	6.076	QD-1	19	.575	2 11/32	1 15/16	1 31/64	-	3 7/8	4.93
H80SF20	SF	1/2 - 2 15/16"	6.91	6.392	QD-1	20	.575	2 15/32	2 1/16	1 35/64	-	4 5/8	5.7
H80SF21	SF	1/2 - 2 15/16"	7.24	6.710	QD-1	21	.575	2 15/32	2 1/16	1 35/64	-	4 5/8	6.3
H80SF22	SF	1/2 - 2 15/16"	7.56	7.027	QD-1	22	.575	2 15/32	2 1/16	1 35/64	-	4 5/8	6.8
H80SF23	SF	1/2 - 2 15/16"	7.88	7.344	QD-1	23	.575	2 15/32	2 1/16	1 35/64	-	4 5/8	7.4
H80SF24	SF	1/2 - 2 15/16"	8.20	7.661	QD-1	24	.575	2 15/32	2 1/16	1 35/64	-	4 5/8	7.9
H80SF25	SF	1/2 - 2 15/16"	8.52	7.979	QD-1	25	.575	2 15/32	2 1/16	1 35/64	-	4 5/8	8.5
H80SF26	SF	1/2 - 2 15/16"	8.84	8.296	QD-1	26	.575	2 15/32	2 1/16	1 35/64	-	4 5/8	9.2
H80SF27	SF	1/2 - 2 15/16"	9.16	8.614	QD-1	27	.575	2 15/32	2 1/16	1 35/64	-	4 5/8	9.8
H80SF28	SF	1/2 - 2 15/16"	9.48	8.931	QD-1	28	.575	2 15/32	2 1/16	1 35/64	-	4 5/8	10.5
H80SF30	SF	1/2 - 2 15/16"	10.11	9.567	QD-1	30	.575	2 15/32	2 1/16	1 35/64	-	4 5/8	12.0
80SF32	SF	1/2 - 2 15/16"	10.75	10.202	QD-1	32	.575	2 15/32	2 1/16	1 35/64	-	4 5/8	13.5
80SF33	SF	1/2 - 2 15/16"	11.07	10.520	QD-1	33	.575	2 15/32	2 1/16	1 35/64	-	4 5/8	14.3
80SF34	SF	1/2 - 2 15/16"	11.39	10.838	QD-1	34	.575	2 15/32	2 1/16	1 35/64	-	4 5/8	15.1
80SF35	SF	1/2 - 2 15/16"	11.71	11.156	QD-1	35	.575	2 15/32	2 1/16	1 35/64	-	4 5/8	16.0
80SF36	SF	1/2 - 2 15/16"	12.03	11.474	QD-1	36	.575	2 15/32	2 1/16	1 35/64	-	4 5/8	16.9
80SF40	SF	1/2 - 2 15/16"	13.31	12.746	QD-1	40	.575	2 15/32	2 1/16	1 35/64	-	4 5/8	20.7
80SF42	SF	1/2 - 2 15/16"	13.94	13.382	QD-1	42	.575	2 15/32	2 1/16	1 35/64	-	4 5/8	23.1
80SF45	SF	1/2 - 2 15/16"	14.90	14.336	QD-1	45	.575	2 15/32	2 1/16	1 35/64	-	4 5/8	25.9
80SF48	SF	1/2 - 2 15/16"	15.86	15.290	QD-1	48	.575	2 15/32	2 1/16	1 35/64	-	4 5/8	29.4
80SF54	SF	1/2 - 2 15/16"	17.77	17.198	QD-1	54	.575	2 15/32	2 1/16	1 35/64	-	4 5/8	37.0
80SF60	SF	1/2 - 2 15/16"	19.68	19.107	QD-1	60	.575	2 15/32	2 1/16	1 35/64	-	4 5/8	45.5
80E70	E	7/8 - 3 1/2"	22.87	22.289	QD-2	70	.575	3 1/4	2 3/4	1 3/16	1 1/2	6	64.4
80E72	E	7/8 - 3 1/2"	23.50	22.926	QD-2	72	.575	3 1/4	2 3/4	1 3/16	1 1/2	6	67.9
80E80	E	7/8 - 3 1/2"	26.05	25.471	QD-2	80	.575	3 1/4	2 3/4	1 3/16	1 1/2	6	83.0
80E84	E	7/8 - 3 1/2"	27.33	26.744	QD-2	84	.575	3 1/4	2 3/4	1 3/16	1 1/2	6	91.1
80E96	E	7/8 - 3 1/2"	31.15	30.563	QD-2	96	.575	3 1/4	2 3/4	1 3/16	1 1/2	6	118
80F112	F	1 - 4"	36.24	35.655	QD-2	112	.575	4 3/8	3 3/4	1 3/8	2 7/16	6 5/8	157



* Bushing mounts with capscrews on "A" side only.

Table No. 2 Steel Finished Bore Single Sprockets

Part No.	DIAMETERS		No. Teeth	Type	STOCK BORES MARKED "X"																DIMENSIONS			Wt. Lbs.
	Outside	Pitch			1"	1 1/8"	1 3/16"	1 1/4"	1 3/8"	1 7/16"	1 1/2"	1 9/16"	1 5/8"	1 3/4"	1 7/8"	1 15/16"	2"	2 3/16"	2 7/16"	2 15/16"	T Norm	L Max.	P	
H809	3.35"	2.924"	9	1	X	X	X	X	-	-	-	-	-	-	-	-	-	-	-	.575"	1 5/8"	47/64"	1.1	
H8010	3.68	3.236	10	1	X	X	X	X	-	-	-	-	-	-	-	-	-	-	-	.575	1 5/8	47/64	1.5	
H8011	4.01	3.550	11	1	X	X	X	X	X	X	X	X	X	X	X	X	X	X	X	.575	1 5/8	47/64	2.0	
H8012	4.33	3.864	12	1	X	X	X	X	X	X	X	X	X	X	X	X	X	X	X	.575	1 5/8	47/64	2.5	
H8013	4.66	4.179	13	1	X	X	X	X	X	X	X	X	X	X	X	X	X	X	X	.575	1 5/8	47/64	2.9	
H8014	4.98	4.494	14	1	X	X	X	X	X	X	X	X	X	X	X	X	X	X	X	.575	1 5/8	47/64	3.9	
H8015	5.31	7.810	15	1	X	X	X	X	X	X	X	X	X	X	X	X	X	X	X	.575	1 5/8	47/64	4.4	
H8016	5.63	5.126	16	1	X	-	X	X	X	X	X	X	X	X	X	X	X	X	X	.575	1 1/2	47/64	6.1	
H8017	5.96	5.442	17	1	X	-	X	X	X	X	X	X	X	X	X	X	X	X	X	.575	1 1/2	47/64	7.5	
H8018	6.27	5.759	18	1	X	-	X	X	X	X	X	X	X	X	X	X	X	X	X	.575	1 5/8	47/64	7.3	
H8019	6.59	6.076	19	1	X	-	X	X	X	X	X	X	X	X	X	X	X	X	X	.575	1 1/2	47/64	7.5	
H8020	6.91	6.392	20	1	X	-	X	X	X	X	X	X	X	X	X	X	X	X	X	.575	1 5/8	47/64	8.7	
H8021	7.24	6.710	21	1	X	-	X	X	X	X	X	X	X	X	X	X	X	X	X	.575	1 5/8	47/64	9.3	
H8022	7.56	7.027	22	1	X	-	X	X	X	X	X	X	X	X	X	X	X	X	X	.575	1 5/8	13/64	10.3	
H8023	7.88	7.344	23	1	X	-	X	X	X	X	X	X	X	X	X	X	X	X	X	.575	1 5/8	13/64	10.9	
H8024	8.20	7.661	24	1	X	-	X	X	X	X	X	X	X	X	X	X	X	X	X	.575	1 5/8	47/64	10.4	
H8025	8.52	7.979	25	1	X	-	X	X	X	X	X	X	X	X	X	X	X	X	X	.575	1 5/8	13/64	12.1	
H8026	8.84	8.296	26	1	-	-	-	X	X	X	X	X	X	X	X	X	X	X	X	.575	1 15/16	1 23/64	11.1	
H8027	9.16	8.614	27	1	-	-	-	X	X	X	X	X	X	X	X	X	X	X	X	.575	1 15/16	1 23/64	15.9	
H8028	9.48	8.931	28	1	-	-	-	X	X	X	X	X	X	X	X	X	X	X	X	.575	1 15/16	1 23/64	16.6	
H8029	9.80	9.249	29	1	-	-	-	X	X	X	X	X	X	X	X	X	X	X	X	.575	1 15/16	1 23/64	17.3	
H8030	10.11	9.567	30	1	-	X	X	X	X	X	X	X	X	X	X	X	X	X	X	.575	1 15/16	1 23/64	14.0	
8032	10.75	10.202	32	1	-	-	-	-	-	X	-	-	-	-	-	-	-	-	-	.575	1 15/16	1 23/64	15.5	
8035	11.71	11.156	35	1	-	-	-	-	-	-	-	-	-	-	-	-	-	-	-	.575	1 15/16	1 23/64	18.0	
8036	12.03	11.474	36	1	-	-	-	-	-	-	-	-	-	-	-	X	-	-	-	.575	1 15/16	1 23/64	18.6	

All stock Finished Bore Sprockets are furnished with Standard Keyway on Centerline of Tooth Hollow Head Setscrew over Keyway. Sprockets with HARDENED TEETH have an additional Setscrew at 90° to Keyway.