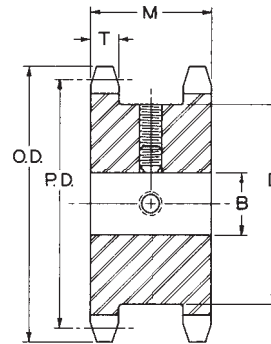
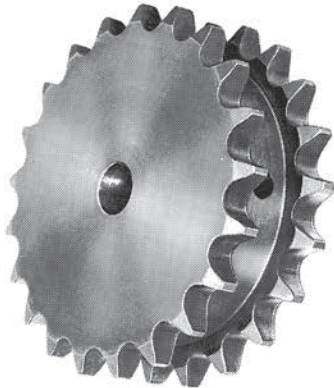


HARDENED TEETH



TYPE DS-A

Table No. 1 Stock Steel Type "A" Double Single Sprockets

| Part No. | DIAMETERS | | | Type | No. Teeth | Bore "B" | | DIMENSIONS | | Wt. Lbs. |
|---|-----------|--------|---------|------|-----------|----------|---------|------------|-------|----------|
| | O.D. | P.D. | D | | | Stock | Max. | M | T | |
| For No. 40, 1/2" Pitch Standard Single Strand Roller Chain | | | | | | | | | | |
| DS40A17 | 2.96" | 2.721" | 2 9/64" | DS-A | 17 | 1/2" | 1 7/16" | 1 13/32" | .284" | 2.8 |
| DS40A19 | 3.28 | 3.038 | 2 15/32 | DS-A | 19 | 5/8 | 1 3/4 | 1 13/32 | .284 | 3.4 |
| DS40A21 | 3.62 | 3.355 | 2 25/32 | DS-A | 21 | 5/8 | 1 7/8 | 1 13/32 | .284 | 4.1 |
| For No. 50, 5/8" Pitch Standard Single Strand Roller Chain | | | | | | | | | | |
| DS50A17 | 3.72 | 3.401 | 2 11/16 | DS-A | 17 | 5/8 | 1 7/8 | 1 21/32 | .343 | 4.1 |
| DS50A19 | 4.12 | 3.797 | 3 5/32 | DS-A | 19 | 5/8 | 2 1/8 | 1 21/32 | .343 | 5.1 |
| DS50A21 | 4.52 | 4.194 | 3 1/2 | DS-A | 21 | 5/8 | 2 3/8 | 1 21/32 | .343 | 6.3 |
| For No. 60, 3/4" Pitch Standard Single Strand Roller Chain | | | | | | | | | | |
| DS60A17 | 4.46 | 4.082 | 3 1/4 | DS-A | 17 | 3/4 | 2 1/4 | 1 61/64 | .459 | 6.8 |
| DS60A19 | 4.95 | 4.557 | 3 23/32 | DS-A | 19 | 3/4 | 2 1/2 | 1 61/64 | .459 | 8.5 |
| DS60A21 | 5.43 | 5.032 | 4 13/64 | DS-A | 21 | 3/4 | 2 3/4 | 1 61/64 | .459 | 10.5 |
| For No. 80, 1" Pitch Standard Single Strand Roller Chain | | | | | | | | | | |
| DS80A17 | 5.95 | 5.442 | 4 21/64 | DS-A | 17 | 1 | 2 13/16 | 2 13/64 | .575 | 13.8 |
| DS80A19 | 6.59 | 6.076 | 4 31/32 | DS-A | 19 | 1 | 3 1/4 | 2 13/64 | .575 | 17.4 |
| DS80A21 | 7.24 | 6.710 | 5 39/64 | DS-A | 21 | 1 | 3 3/4 | 2 13/64 | .575 | 21.4 |

Browning Stock Type "A" Double Single Sprockets are for use with two single strand chains, normally one drive chain and one driven chain as on roll case drives or live roller conveyor drives. They are made of steel and have HARDENED TEETH. They can be rebored to the maximum shown in the table which is with standard keyway and setscrew over keyway. Slightly larger bores are possible with no keyway or with setscrew at angle to keyway.