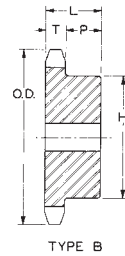
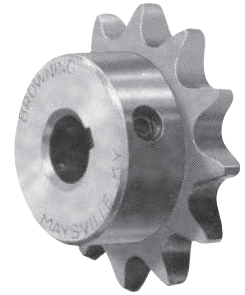


Sprockets for No. 25, 1/4" Pitch ANSI Chain

Table No. 1 Steel Type "B" Minimum Bore Sprockets

Part No.	DIAMETERS		No. Teeth	Type	Bore		DIMENSIONS				Wt. Lbs
	Outside	Pitch			Stock	Max. *	T Nom.	L Max.	P	H	
25B9	.84"	.731"	9	B	1/4"	1/4"	.110"	1/2"	25/64"	7/16"	.03
25B10	.92	.809	10	B	1/4	1/4	.110	1/2	25/64	1/2	.05
25B11	.99	.887	11	B	1/4	5/16	.110	1/2	25/64	9/16	.05
25B12	1.08	.966	12	B	1/4	3/8	.110	1/2	25/64	5/8	.06
25B13	1.17	1.045	13	B	1/4	7/16	.110	1/2	25/64	23/32	.06
25B14	1.24	1.124	14	B	1/4	9/16	.110	1/2	25/64	13/16	.08
25B15	1.33	1.203	15	B	1/4	9/16	.110	1/2	25/64	57/64	.10
25B16	1.41	1.282	16	B	1/4	9/16	.110	1/2	25/64	31/32	.11
25B17	1.49	1.361	17	B	1/4	5/8	.110	1/2	25/64	1 1/32	.13
25B18	1.57	1.440	18	B	1/4	3/4	.110	1/2	25/64	1 1/8	.15
25B19	1.65	1.519	19	B	1/4	13/16	.110	1/2	25/64	1 7/32	.18
25B20	1.73	1.598	20	B	1/4	7/8	.110	5/8	33/64	1 9/32	.24
25B21	1.81	1.678	21	B	1/4	7/8	.110	5/8	33/64	1 3/8	.28
25B22	1.89	1.757	22	B	1/4	15/16	.110	5/8	33/64	1 7/16	.30
25B23	1.97	1.836	23	B	1/4	1	.110	5/8	33/64	1 1/2	.33
25B24	2.05	1.915	24	B	3/8	1	.110	5/8	33/64	1 1/2	.33
25B25	2.13	1.995	25	B	3/8	1	.110	5/8	33/64	1 1/2	.34
25B26	2.21	2.074	26	B	3/8	1	.110	5/8	33/64	1 1/2	.34
25B28	2.37	2.233	28	B	3/8	1	.110	5/8	33/64	1 1/2	.36
25B30	2.53	2.392	30	B	3/8	1	.110	5/8	33/64	1 1/2	.38
25B32	2.69	2.551	32	B	3/8	1	.110	5/8	33/64	1 1/2	.40
25B36	3.01	2.869	36	B	3/8	1	.110	5/8	33/64	1 1/2	.44
25B40	3.33	3.187	40	B	1/2	1 3/8	.110	3/4	41/64	2	.78
25B45	3.73	3.584	45	B	1/2	1 3/8	.110	3/4	41/64	2	.84
25B48	3.96	3.823	48	B	1/2	1 3/8	.110	3/4	41/64	2	.89
25B54	4.44	4.300	54	B	1/2	1 3/8	.110	3/4	41/64	2	1.29
25B60	4.92	4.777	60	B	1/2	1 3/8	.110	3/4	41/64	2	1.51
25B70	5.72	5.572	70	B	1/2	1 3/8	.110	3/4	41/64	2	1.91
25B72	5.88	5.732	72	B	1/2	1 3/8	.110	3/4	41/64	2	2.00



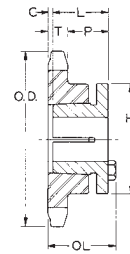
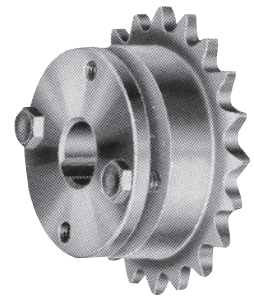
TYPE B

*Maximum bore shown will accommodate standard keyway and setscrews over keyway. Slightly larger bores are possible with no keyway, shallow keyway or setscrew at angle to keyway.
Type "B" Sprockets are made with minimum bore, no keyseat and no setscrew. They can be bored to size with keyseat and setscrew for a reasonable extra charge.

Sprockets for No. 35, 3/8" Pitch ANSI Chain

Table No. 2 Steel Single Sprockets with Browning Split Taper® Bushings

Part No.	Bushing	Bore Range	DIAMETERS		No. Teeth	Type	DIMENSIONS						Wt. Less Bushing
			Outside	Pitch			T Nom.	OL	L	P	C	H	
35G15	G	3/8-1"	1.99"	1.804"	15	.3	.168"	1 11/32"	1"	1"	5/32"	2"	.3
35G16	G	3/8-1"	2.10	1.922	16	.3	.168	1 11/32	1	1	5/32	2	.3
35G17	G	3/8-1"	2.23	2.041	17	.3	.168	1 11/32	1	1	5/32	2	.3
35G18	G	3/8-1"	2.35	2.159	18	.3	.168	1 11/32	1	1	5/32	2	.3
35G19	G	3/8-1"	2.47	2.278	19	.3	.168	1 1/4	1	29/32	1/16	2	.3
35H19	H	3/8-1 1/2	2.47	2.278	19	.3	.168	1 1/2	1 1/4	1 5/32	1/16	2 1/2	.5
35H20	H	3/8-1 1/2	2.59	2.397	20	.3	.168	1 1/2	1 1/4	1 5/32	1/16	2 1/2	.5
35H21	H	3/8-1 1/2	2.70	2.516	21	.3	.168	1 1/2	1 1/4	1 5/32	1/16	2 1/2	.6
35H22	H	3/8-1 1/2	2.83	2.635	22	.3	.168	1 1/2	1 1/4	1 5/32	1/16	2 1/2	.7
35H23	H	3/8-1 1/2	2.95	2.754	23	.3	.168	1 1/2	1 1/4	1 5/32	1/16	2 1/2	.7
35H24	H	3/8-1 1/2	3.05	2.873	24	.3	.168	1 1/2	1 1/4	1 5/32	1/16	2 1/2	.8
35H25	H	3/8-1 1/2	3.19	2.992	25	.3	.168	1 1/2	1 1/4	1 5/32	1/16	2 1/2	.8
35H26	H	3/8-1 1/2	3.31	3.111	26	.3	.168	1 1/2	1 1/4	1 5/32	1/16	2 1/2	.8
35H28	H	3/8-1 1/2	3.55	3.349	28	.3	.168	1 1/2	1 1/4	1 5/32	1/16	2 1/2	.9
35H30	H	3/8-1 1/2	3.79	3.588	30	.3	.168	1 1/2	1 1/4	1 5/32	1/16	2 1/2	.9
35H32	H	3/8-1 1/2	4.03	3.826	32	.3	.168	1 1/2	1 1/4	1 5/32	1/16	2 1/2	.9
35H35	H	3/8-1 1/2	4.39	4.183	35	.3	.168	1 1/2	1 1/4	1 5/32	1/16	2 1/2	1.0
35H36	H	3/8-1 1/2	4.51	4.303	36	.3	.168	1 1/2	1 1/4	1 5/32	1/16	2 1/2	1.0
35H40	H	3/8-1 1/2	4.99	4.780	40	.3	.168	1 1/2	1 1/4	1 5/32	1/16	2 1/2	1.2
35H42	H	3/8-1 1/2	5.23	5.018	42	.3	.168	1 1/2	1 1/4	1 5/32	1/16	2 1/2	1.2
35H45	H	3/8-1 1/2	5.59	5.379	45	.3	.168	1 1/2	1 1/4	1 5/32	1/16	2 1/2	1.4
35H48	H	3/8-1 1/2	5.95	5.734	48	.3	.168	1 1/2	1 1/4	1 5/32	1/16	2 1/2	1.5
35H54	H	3/8-1 1/2	6.66	6.449	54	.3	.168	1 1/2	1 1/4	1 5/32	1/16	2 1/2	1.8
35H60	H	3/8-1 1/2	7.38	7.165	60	.3	.168	1 1/2	1 1/4	1 5/32	1/16	2 1/2	2.3
35H70	H	3/8-1 1/2	8.58	8.358	70	.3	.168	1 1/2	1 1/4	1 5/32	1/16	2 1/2	2.8
35H72	H	3/8-1 1/2	8.81	8.597	72	.3	.168	1 1/2	1 1/4	1 5/32	1/16	2 1/2	3.0
35H80	H	3/8-1 1/2	9.77	9.552	80	.3	.168	1 1/2	1 1/4	1 5/32	1/16	2 1/2	3.8
35H84	H	3/8-1 1/2	10.25	10.029	84	.3	.168	1 1/2	1 1/4	1 5/32	1/16	2 1/2	4.0
35H96	H	3/8-1 1/2	11.68	11.461	96	.3	.168	1 1/2	1 1/4	1 5/32	1/16	2 1/2	5.3
35H112	H	3/8-1 1/2	13.59	13.371	112	.3	.168	1 1/2	1 1/4	1 5/32	1/16	2 1/2	6.8



TYPE 3

Standard Keyseats

Table No. 3

Bore Range	Keyseat
3/8" - 7/16"	None
1/2 - 9/16	1/8" X 1/16"
5/8 - 7/8	3/16 X 3/32
15/16 - 1 1/4	1/4 X 1/8
1 5/16 - 1 3/8	5/16 X 5/32
1 7/16 - 1 3/4	3/8 X 3/16

1 3/8" Bore Bushings also available with 3/8" x 3/16" Keyseat.