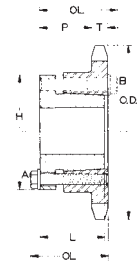


SPROCKETS FOR No. 60 $\frac{3}{4}$ " PITCH ANSI CHAIN
TABLE No. 1 STEEL SINGLE SPROCKETS WITH Q-D® BUSHINGS

PART No.	BUSHING	BORE RANGE	DIAMETERS		TYPE	No. TEETH	DIMENSIONS					Wt. Less BUSHING
			OUTSIDE	PITCH			T NORM.	OL	L	P	H	
H60JA11*	JA	1/2 - 1 1/4"	3.00"	2.662"	QD-1	11	.459"	1 5/16"	.89"	2 3/32"	2"	.54
H60JA12	JA	1/2 - 1 1/4"	3.25	2.898	QD-1	12	.459	1 5/16	.89	2 3/32	2	.74
H60JA13	JA	1/2 - 1 1/4"	3.49	3.134	QD-1	13	.459	1 5/16	.89	2 3/32	2	.89
H60SH14	SH	1/2 - 1 5/8"	3.74	3.371	QD-1	14	.459	1 43/64	1.2	1 3/64	2 11/16	1.04
H60SH15	SH	1/2 - 1 5/8"	3.98	3.607	QD-1	15	.459	1 43/64	1.2	1 3/64	2 11/16	1.30
H60SH16	SH	1/2 - 1 5/8"	4.22	3.844	QD-1	16	.459	1 43/64	1.2	1 3/64	2 11/16	1.57
H60SDS17	SDS	1/2 - 2"	4.46	4.082	QD-1	17	.459	1 21/32	1.33	1 1/32	3 1/8	1.57
H60SDS18	SDS	1/2 - 2"	4.70	4.319	QD-1	18	.459	1 21/32	1.33	1 1/32	3 1/8	1.78
H60SDS19	SDS	1/2 - 2"	4.95	4.557	QD-1	19	.459	1 21/32	1.33	1 1/32	3 1/8	2.01
H60SDS20	SDS	1/2 - 2"	5.19	4.794	QD-1	20	.459	1 21/32	1.33	1 1/32	3 1/8	2.23
H60SDS21	SDS	1/2 - 2"	5.43	5.032	QD-1	21	.459	1 21/32	1.33	1 1/32	3 1/8	2.45
H60SDS22	SDS	1/2 - 2"	5.67	5.270	QD-1	22	.459	1 21/32	1.33	1 1/32	3 1/8	2.69
H60SDS23	SDS	1/2 - 2"	5.91	5.508	QD-1	23	.459	1 21/32	1.33	1 1/32	3 1/8	2.94
H60SDS24	SDS	1/2 - 2"	6.15	5.746	QD-1	24	.459	1 21/32	1.33	1 1/32	3 1/8	3.20
H60SDS25	SDS	1/2 - 2"	6.39	5.984	QD-1	25	.459	1 21/32	1.33	1 1/32	3 1/8	3.47
H60SK26	SK	1/2 - 2 5/8"	6.63	6.222	QD-1	26	.459	2 23/64	1 3/4	1 45/64	3 7/8	4.53
H60SK27	SK	1/2 - 2 5/8"	6.87	6.460	QD-1	27	.459	2 23/64	1 3/4	1 45/64	3 7/8	4.82
H60SK28	SK	1/2 - 2 5/8"	7.11	6.699	QD-1	28	.459	2 23/64	1 3/4	1 45/64	3 7/8	5.1
H60SK30	SK	1/2 - 2 5/8"	7.59	7.175	QD-1	30	.459	2 23/64	1 3/4	1 45/64	3 7/8	5.8
H60SK32	SK	1/2 - 2 5/8"	8.07	7.652	QD-1	32	.459	2 23/64	1 3/4	1 45/64	3 7/8	6.5
H60SK35	SK	1/2 - 2 5/8"	8.78	8.367	QD-1	35	.459	2 23/64	1 3/4	1 45/64	3 7/8	7.6
H60SK36	SK	1/2 - 2 5/8"	9.02	8.605	QD-1	36	.459	2 23/64	1 3/4	1 45/64	3 7/8	8.0
60SK40	SK	1/2 - 2 5/8"	9.98	9.559	QD-1	40	.459	2 23/64	1 3/4	1 45/64	3 7/8	9.7
60SF42	SF	1/2 - 2 15/16"	10.46	10.036	QD-1	42	.459	2 25/64	2	1 45/64	4 5/8	11.4
60SF45	SF	1/2 - 2 15/16"	11.18	10.752	QD-1	45	.459	2 25/64	2	1 45/64	4 5/8	12.9
60SF48	SF	1/2 - 2 15/16"	11.89	11.467	QD-1	48	.459	2 25/64	2	1 45/64	4 5/8	14.5
60SF54	SF	1/2 - 2 15/16"	13.33	12.899	QD-1	54	.459	2 25/64	2	1 45/64	4 5/8	17.4
60SF60	SF	1/2 - 2 15/16"	14.76	14.331	QD-1	60	.459	2 25/64	2	1 45/64	4 5/8	21.2
60SF70	SF	1/2 - 2 15/16"	17.15	16.717	QD-1	70	.459	2 25/64	2	1 45/64	4 5/8	28.4
60SF72	SF	1/2 - 2 15/16"	17.63	17.194	QD-1	72	.459	2 25/64	2	1 45/64	4 5/8	30.0
60SF80	SF	1/2 - 2 15/16"	19.54	19.103	QD-1	80	.459	2 25/64	2	1 45/64	4 5/8	36.8
60SF84	SF	1/2 - 2 15/16"	20.49	20.058	QD-1	84	.459	2 25/64	2	1 45/64	4 5/8	40.4
60SF96	SF	1/2 - 2 15/16"	23.36	22.922	QD-1	96	.459	2 25/64	2	1 45/64	4 5/8	52.4

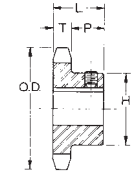
 ↑ Hardened Teeth
 ↓


Type QD-1

STANDARD KEYSEATS
TABLE No. 2

BORE RANGE	KEYSEAT
3/8" - 7/16"	None
1/2 - 9/16"	1/8" X 1/16"
5/8 - 7/8"	3/16 X 3/32
15/16 - 1 1/4"	1/4 X 1/8
1 5/16 - 1 3/8"	5/16 X 5/32
1 7/16 - 1 3/4"	3/8 X 3/16
1 13/16 - 2 1/4"	1/2 X 1/4
2 5/16 - 2 3/4"	5/8 X 5/16
3 1/16 - 3 1/4"	3/4 X 3/8
3 3/8 - 3 3/4"	7/8 X 7/16

1 3/8" Bore Bushings also available with 3/8" x 3/16" Keyseat.



Type 1