

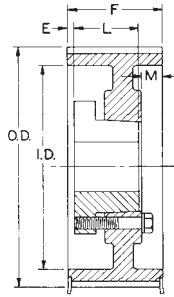


### Standard Keyseats

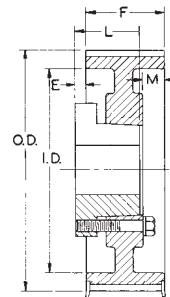
Table No. 1

Bore Range	Keyseat	Bore Range	Keyseat
3/4" to 7/8"	3/16" x 3/32"	2 5/16 to 2 3/4	5/8 x 5/16
15/16 to 1 1/4	1/4 x 1/8	2 13/16 to 3 1/4	3/4 x 3/8
1 5/16 & 1 3/8	5/16 x 5/32	3 3/8 to 3 3/4	7/8 x 7/16
1 7/16 to 1 3/4	3/8 x 3/16	3 7/8 to 4 1/2	1 x 1/2
1 13/16 to 2 1/4	1/2 x 1/4		

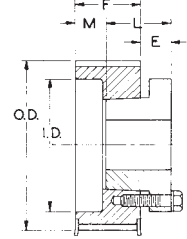
1 3/8" Bore Bushings also available with 3/8" x 3/16" Keyseat.



TYPE A



TYPE D



TYPE E

Table No. 2

### Specifications — Gearbelt® Pulleys with Q-D® Bushings

Part No.	Bushing	Bore Range	Type	Number of Grooves	Diameters				Dimensions			Wt. Less Bush.
					Pitch	Flange	O.D.	I.D.	E	L	M	
<b>For XH200 Belts, 7/8" Pitch, 2" Wide, F = 2 9/16"</b>												
18XH200SK	SK	1/2" - 2 5/8"	E1F	18	5.013"	5 9/16"	4.903"	3 1/8"	25/32"	1 3/4"	1 5/16"	9
20XH200SK	SK	1/2 - 2 5/8	D1F	20	5.570	6 1/8	5.460	4 1/8	1/8	1 3/4	21/32	10
21XH200SK	SK	1/2 - 2 5/8	D1F	21	5.849	6 1/4	5.739	4 5/16	1/8	1 3/4	21/32	10
22XH200SK	SK	1/2 - 2 5/8	D1F	22	6.127	6 11/16	6.017	4 3/8	1/8	1 3/4	21/32	11
23XH200SK	SK	1/2 - 2 5/8	D1F	23	6.406	6 13/16	6.296	4 11/16	1/8	1 3/4	21/32	12
24XH200SF	SF	1/2 - 2 15/16	D1F	24	6.685	7 1/4	6.575	4 15/16	3/16	2	21/32	12
25XH200SF	SF	1/2 - 2 15/16	D1F	25	6.963	7 1/4	6.853	5 1/4	3/16	2	21/32	13
26XH200SF	SF	1/2 - 2 15/16	D1F	26	7.241	7 3/4	7.131	5 1/2	3/16	2	21/32	14
27XH200SF	SF	1/2 - 2 15/16	D1F	27	7.520	7 15/16	7.410	5 3/4	3/16	2	21/32	15
28XH200E	E	7/8 - 3 1/2	D1F	28	7.799	8 3/8	7.689	5 15/16	11/16	2 3/4	15/32	16
29XH200E	E	7/8 - 3 1/2	D1F	29	8.077	8 1/2	7.967	6 1/4	11/16	2 3/4	15/32	19
30XH200E	E	7/8 - 3 1/2	D1F	30	8.356	8 7/8	8.246	6 1/2	11/16	2 3/4	15/32	21
32XH200E	E	7/8 - 3 1/2	D1F	32	8.913	9 7/16	8.803	7	11/16	2 3/4	15/32	24
36XH200E	E	7/8 - 3 1/2	D2F	36	10.027	10 9/16	9.917	8 1/16	11/16	2 3/4	15/32	32
40XH200F	F	1 - 4	D2F	40	11.141	11 11/16	11.031	9 1/4	15/16	3 3/4	1/32	39
48XH200F	F	1 - 4	D2	48	13.369	—	13.259	12	15/16	3 3/4	1/32	46
60XH200F	F	1 - 4	D3	60	16.711	—	16.601	15 3/16	15/16	3 3/4	1/32	46
72XH200F	F	1 - 4	D3	72	20.054	—	19.944	18 11/16	15/16	3 3/4	1/32	57
84XH200F	F	1 - 4	D3	84	23.396	—	23.286	22	15/16	3 3/4	1/32	66
96XH200F	F	1 - 4	D3	96	26.738	—	26.628	25 3/8	15/16	3 3/4	1/32	80
120XH200F	F	1 - 4	D3	120	33.423	—	33.313	32	15/16	3 3/4	1/32	101
<b>For XH300 Belts, 7/8" Pitch, 3" Wide, F = 3 5/8"</b>												
18XH300SK	SK	1/2" - 2 5/8"	E1F	18	5.013"	5 9/16"	4.903"	3 1/8"	25/32"	1 3/4"	2 3/8"	11
20XH300SK	SK	1/2 - 2 5/8	A1F	20	5.570	6 1/8	5.460	4 1/8	13/32	1 3/4	1 3/16	12
21XH300SK	SK	1/2 - 2 5/8	A1F	21	5.849	6 1/4	5.739	4 5/16	13/32	1 3/4	1 3/16	13
22XH300SK	SK	1/2 - 2 5/8	A1F	22	6.127	6 11/16	6.017	4 3/8	13/32	1 3/4	1 3/16	14
23XH300SK	SK	1/2 - 2 5/8	A1F	23	6.406	6 13/16	6.296	4 11/16	13/32	1 3/4	1 3/16	15
24XH300SF	SF	1/2 - 2 15/16	A1F	24	6.685	7 1/4	6.575	4 15/16	11/32	2	1 3/16	16
25XH300SF	SF	1/2 - 2 15/16	A1F	25	6.963	7 1/4	6.853	5 1/4	11/32	2	1 3/16	17
26XH300SF	SF	1/2 - 2 15/16	A1F	26	7.241	7 3/4	7.131	5 1/2	11/32	2	1 3/16	18
27XH300SF	SF	1/2 - 2 15/16	A1F	27	7.520	7 15/16	7.410	5 3/4	11/32	2	1 3/16	19
28XH300E	E	7/8 - 3 1/2	D1F	28	7.799	8 3/8	7.689	5 15/16	5/32	2 3/4	1	20
29XH300E	E	7/8 - 3 1/2	D1F	29	8.077	8 1/2	7.967	6 1/4	5/32	2 3/4	1	23
30XH300E	E	7/8 - 3 1/2	D1F	30	8.356	8 7/8	8.246	6 1/2	5/32	2 3/4	1	25
32XH300E	E	7/8 - 3 1/2	D1F	32	8.913	9 7/16	8.803	7	5/32	2 3/4	1	29
36XH300E	E	7/8 - 3 1/2	D2F	36	10.027	10 9/16	9.917	8 1/16	5/32	2 3/4	1	37
40XH300F	F	1 - 4	D2F	40	11.141	11 11/16	11.031	9 1/4	25/32	3 3/4	9/16	45
48XH300F	F	1 - 4	D2	48	13.369	—	13.259	12	25/32	3 3/4	9/16	53
60XH300F	F	1 - 4	D3	60	16.711	—	16.601	15 3/16	25/32	3 3/4	9/16	57
72XH300J	J	1 1/2 - 4 1/2	D3	72	20.054	—	19.944	18 11/16	1 7/32	4 5/8	7/32	76
84XH300J	J	1 1/2 - 4 1/2	D3	84	23.396	—	23.286	22	1 7/32	4 5/8	7/32	88
96XH300J	J	1 1/2 - 4 1/2	D3	96	26.738	—	26.628	25 3/8	1 7/32	4 5/8	7/32	102
120XH300J	J	1 1/2 - 4 1/2	D3	120	33.423	—	33.313	32	1 7/32	4 5/8	7/32	134
<b>For XH400 Belts, 7/8" Pitch, 4" Wide, F = 4 11/16"</b>												
20XH400SK	SK	1/2" - 2 5/8"	A1F	20	5.570"	6 1/8"	5.460"	4 1/8"	13/32"	1 15/16"	2 1/4"	15
22XH400SK	SK	1/2 - 2 5/8	A1F	22	6.127	6 11/16	6.017	4 3/8	13/32	1 15/16	2 1/4	17
24XH400SF	SF	1/2 - 2 15/16	A1F	24	6.685	7 1/4	6.575	4 15/16	11/32	2 1/16	2 1/4	19
26XH400SF	SF	1/2 - 2 15/16	A1F	26	7.241	7 3/4	7.131	5 1/2	11/32	2 1/16	2 1/4	21
28XH400E	E	7/8 - 3 1/2	A1F	28	7.799	8 3/8	7.689	5 15/16	3/8	2 3/4	1 17/32	23
30XH400E	E	7/8 - 3 1/2	A1F	30	8.356	8 7/8	8.246	6 1/2	3/8	2 3/4	1 17/32	30
32XH400E	E	7/8 - 3 1/2	A2F	32	8.913	9 7/16	8.803	7	3/8	2 3/4	1 17/32	34
36XH400E	E	7/8 - 3 1/2	A2F	36	10.027	10 9/16	9.917	8 1/16	3/8	2 3/4	1 17/32	44
40XH400F	F	1 - 4	D2F	40	11.141	11 11/16	11.031	9 1/4	1/4	3 3/4	1 3/32	52
48XH400J	J	1 1/2 - 4 1/2	D2	48	13.369	—	13.259	12	11/16	4 5/8	3/4	67
60XH400J	J	1 1/2 - 4 1/2	D3	60	16.711	—	16.601	15 3/16	11/16	4 5/8	3/4	74
72XH400J	J	1 1/2 - 4 1/2	D3	72	20.054	—	19.944	18 11/16	11/16	4 5/8	3/4	90
84XH400J	J	1 1/2 - 4 1/2	D3	84	23.396	—	23.286	22	11/16	4 5/8	3/4	102
96XH400J	J	1 1/2 - 4 1/2	D3	96	26.738	—	26.628	25 3/8	11/16	4 5/8	3/4	124
120XH400J	J	1 1/2 - 4 1/2	D3	120	33.423	—	33.313	32	11/16	4 5/8	3/4	156

NOTE — Numerals in Type Designations mean: 1 = Solid, 2 = Web, and 3 = Arm Construction; F = Flanged Pulley.