

Table No. 1 Steel Double Type "B" Minimum Bore Sprockets

Part No.	DIAMETERS		No. Teeth	Type	BORE		DIMENSIONS					Wt. Lbs.
	Outside	Pitch			Stock	Max.*	T	M	L Max.	P	H	
SMALLER SIZES ON PRECEDING PAGE												
D40B23	3.94"	3.672"	23	DB	5/8	2"	.275"	.841"	1 1/2"	21/32"	3"	3.3
D40B24	4.10	3.831	24	DB	5/8	2 1/4	.275	.841	1 1/2	21/32	3 1/4	3.6
D40B25	4.26	3.989	25	DB	5/8	2 1/4	.275	.841	1 1/2	21/32	3 1/4	3.9
D40B26	4.42	4.148	26	DB	5/8	2 1/4	.275	.841	1 1/2	21/32	3 1/4	4.1
D40B30	5.06	4.783	30	DB	7/8	2 1/4	.275	.841	1 1/2	21/32	3 1/4	5.1
D40B32	5.38	5.101	32	DB	7/8	2 1/4	.275	.841	1 1/2	21/32	3 1/4	5.8
D40B35	5.86	5.578	35	DB	7/8	2 1/4	.275	.841	1 1/2	21/32	3 1/4	6.8
D40B36	6.02	5.737	36	DB	7/8	2 3/4	.275	.841	1 1/2	21/32	4	7.9
D40B40	6.65	6.373	40	DB	7/8	2 3/4	.275	.841	1 3/4	29/32	4	10.1
D40B42	6.97	6.691	42	DB	7/8	2 3/4	.275	.841	1 3/4	29/32	4	10.8
D40B45	7.45	7.168	45	DB	7/8	2 3/4	.275	.841	1 3/4	29/32	4	12.1
D40B48	7.93	7.645	48	DB	7/8	2 3/4	.275	.841	1 3/4	29/32	4	13.3
D40B52	8.57	8.281	52	DB	7/8	2 3/4	.275	.841	1 3/4	29/32	4	15.2
D40B54	8.89	8.599	54	DB	7/8	2 3/4	.275	.841	1 3/4	29/32	4	16.2
D40B60	9.84	9.554	60	DB	7/8	2 3/4	.275	.841	1 3/4	29/32	4	19.3
D40B68	11.12	10.826	68	DB	1 3/16	2 3/4	.275	.841	2 1/8	1 9/32	4 1/4	25.7
D40B72	11.75	11.463	72	DB	1 3/16	2 3/4	.275	.841	2 1/8	1 9/32	4 1/4	28.3
D40B76	12.39	12.099	76	DB	1 3/16	2 3/4	.275	.841	2 1/8	1 9/32	4 1/4	31.0
D40B84	13.66	13.372	84	DB	1 3/16	3	.275	.841	2 1/8	1 9/32	4 1/2	37.6
D40B96	15.57	15.281	96	DB	1 3/16	3	.275	.841	2 1/8	1 9/32	4 1/2	47.7
D40B102	16.53	16.236	102	DB	1 3/16	3	.275	.841	2 1/8	1 9/32	4 1/4	53.3
D40B112	18.12	17.828	112	DB	1 3/16	3	.275	.841	2 1/8	1 9/32	4 1/2	63.3

* Maximum bore shown is with standard keyway and setscrew over keyway. Slightly larger bores are possible with no keyway, shallow keyway or setscrew at angle to keyway
 † Hub is recessed for chain clearance.

These Type "B" sprockets are made without keyways or setscrews. They are furnished with a minimum bore which can be rebored to size and keywayed for a reasonable extra charge.

Table No. 2 Steel Triple Sprockets with Browning Split Taper® Bushings

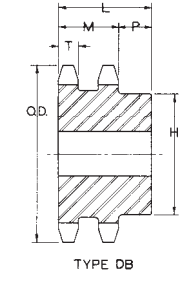
Part No.	Bushing	Bore Range	DIAMETERS		No. Teeth	Type	DIMENSIONS						Wt. Less Bushing	
			Outside	Pitch			T	M	OL	L	P	C		H
T40P18	P1	1/2-1 3/4"	3.14"	2.879"	18	22	.275"	1.407"	2 15/32"	1 15/16"	2 27/32"	29/32"	3"	1.9
T40P19	P1	1/2-1 3/4	3.30	3.038	19	22	.275	1.407	2 15/32	1 15/16	2 27/32	29/32	3	1.8
T40P20	P1	1/2-1 3/4	3.46	3.196	20	22	.275	1.407	2 31/32	1 15/16	1 5/16	25/32	3	2.0
T40P23	P1	1/2-1 3/4	3.94	3.672	23	23	.275	1.407	2 9/32	1 15/16	5/8	3/32	3	2.3
T40P24	P1	1/2-1 3/4	4.10	3.831	24	23	.275	1.407	2 9/32	1 15/16	5/8	3/32	3	2.6
T40P25	P1	1/2-1 3/4	4.26	3.989	25	23	.275	1.407	2 9/32	1 15/16	5/8	3/32	3	3.0
T40P27	P1	1/2-1 3/4	4.58	4.307	27	23	.275	1.407	2 9/32	1 15/16	5/8	3/32	3	3.3
T40Q30	Q1	3/4-2 11/16	5.06	4.783	30	22	.275	1.407	2 25/32	2 1/2	1 3/32	0	4 1/8	4.5
T40Q35	Q1	3/4-2 11/16	5.86	5.578	35	22	.275	1.407	2 25/32	2 1/2	1 3/32	0	4 1/8	6.9
T40Q36	Q1	3/4-2 11/16	6.02	5.737	36	22	.275	1.407	2 25/32	2 1/2	1 3/32	0	4 1/8	7.6
T40Q42	Q1	3/4-2 11/16	6.97	6.691	42	22	.275	1.407	2 25/32	2 1/2	1 3/32	0	4 1/8	11.1
T40Q48	Q1	3/4-2 11/16	7.93	7.645	48	22	.275	1.407	2 25/32	2 1/2	1 3/32	0	4 1/8	15.2
T40Q52	Q1	3/4-2 11/16	8.57	8.281	52	22	.275	1.407	2 25/32	2 1/2	1 3/32	0	4 1/8	18.7
T40Q54	Q1	3/4-2 11/16	8.89	8.599	54	22	.275	1.407	2 25/32	2 1/2	1 3/32	0	4 1/8	19.9
T40Q60	Q1	3/4-2 11/16	9.84	9.554	60	22	.275	1.407	2 25/32	2 1/2	1 3/32	0	4 1/8	25.3
T40Q68	Q1	3/4-2 11/16	11.12	10.826	68	22	.275	1.407	2 25/32	2 1/2	1 3/32	0	4 1/8	33.5
T40Q72	Q1	3/4-2 11/16	11.75	11.463	72	22	.275	1.407	2 25/32	2 1/2	1 3/32	0	4 1/8	37.9
T40Q76	Q1	3/4-2 11/16	12.39	12.099	76	22	.275	1.407	2 25/32	2 1/2	1 3/32	0	4 1/8	42.5
T40Q84	Q1	3/4-2 11/16	13.66	13.372	84	22	.275	1.407	2 25/32	2 1/2	1 3/32	0	4 1/8	52.4
T40Q95	Q1	3/4-2 11/16	15.41	15.122	95	22	.275	1.407	2 25/32	2 1/2	1 3/32	0	4 1/8	67.9
T40Q102	Q1	3/4-2 11/16	16.53	16.236	102	22	.275	1.407	2 25/32	2 1/2	1 3/32	0	4 1/8	78.5

Table No. 3 Steel Triple Sprockets with Q-D® Bushings

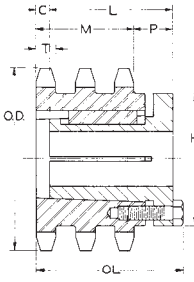
Part No.	Bushing	Bore Range	DIAMETERS		Type	No. Teeth	DIMENSIONS						Wt. Less Bushing
			Outside	Pitch			T	M	OL Max.	L	P	H	
T40SK36	SK	1/2-2 5/8"	6.02"	5.737"	QD-8	36	.275"	1.407"	2 11/32"	1 15/16"	21/32"	3 7/8"	6.8
T40SK42	SK	1/2-2 5/8	6.97	6.691	QD-8	42	.275	1.407	2 11/32	1 15/16	21/32	3 7/8	10.4
T40SK48	SK	1/2-2 5/8	7.93	7.645	QD-8	48	.275	1.407	2 11/32	1 15/16	21/32	3 7/8	14.5
T40SK52	SK	1/2-2 5/8	8.57	8.281	QD-8	52	.275	1.407	2 11/32	1 15/16	21/32	3 7/8	17.6
T40SK60	SK	1/2-2 5/8	9.84	9.554	QD-8	60	.275	1.407	2 11/32	1 15/16	21/32	3 7/8	24.6
T40SF68	SF	1/2-2 15/16	11.12	10.826	QD-8	68	.275	1.407	2 13/32	2 1/16	23/32	4 5/8	31.8
T40SF72	SF	1/2-2 15/16	11.75	11.463	QD-8	72	.275	1.407	2 13/32	2 1/16	23/32	4 5/8	36.1
T40SF84	SF	1/2-2 15/16	13.66	13.372	QD-8	84	.275	1.407	2 13/32	2 1/16	23/32	4 5/8	50.6

HARDENED TEETH

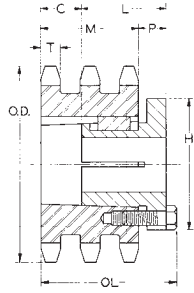
HARDENED TEETH



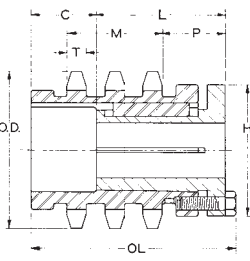
TYPE DB



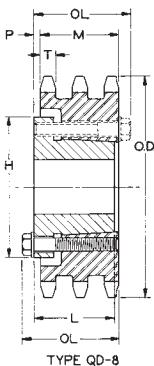
TYPE 22



TYPE 23



TYPE 27



TYPE QD-8